

Shop Floor Control

w/Scheduling & Capacity Planning



Built with simplicity and flexibility in mind, *Shop.Floor.Control* provides another cornerstone to the growing manufacturing solutions for MBS Solomon. As the author of the Solomon Work Order module, Sandler•Kahne has incorporated their deep knowledge of the Work Order and Bill of Materials modules into the design of *Shop.Floor.Control*.

to routing steps for a work order, Scheduling will set the requirement dates for components and feed the information to Available-to-Promise in the Inventory module.

What about those half-done work orders that you put on hold last week? Re-scheduling them where you left off is easily handled by re-scheduling the remaining routing steps.

**Add-on Module
for
MBS Solomon
Manufacturing
Series**

Dispatch Control

As you engage in the process of loading the shop with queued work orders, it is very useful to be able to analyze the impact of a potential schedule before releasing it to the shop floor. Dispatch Control provides the opportunity to build 'what-if' scenarios and view them using Shop Status Inquiry.

As you are preparing to release your new work orders, you may order them by Customer, Part to Build, Planned Start Date, Processing Stage, or Priority Code, and apply various filters to help you manage the process.

Capacity Planning

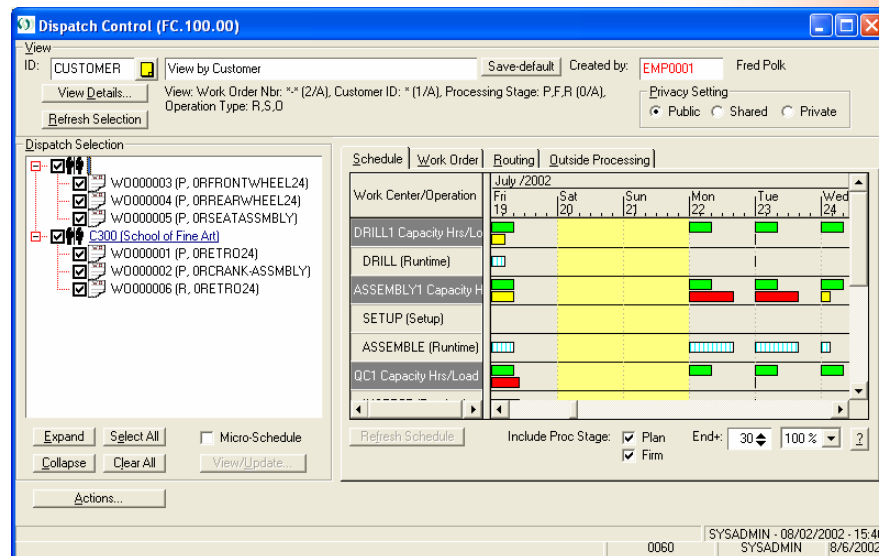
The shop calendar allows you to manage daily workcenter capacity on an exception basis. This includes global plant holidays with override capability on each work-center.

Used in conjunction with the graphical Dispatch Control and Shop Status Inquiry functions, this "visual manufacturing" model results in an intuitive set of tools with which to manage your shop.

Shop Status Inquiry

This powerful application puts all the information at your fingertips that you will need in order to efficiently manage your shop floor. View your shop floor by work-center, operation, or work order – presented in a familiar explorer-type style.

It's time for you to prepare the coming week's activity on the Shop Floor. What's going on out there, anyway? What work orders are in various stages of completion and how soon will the workcenters scheduled for them become available? Multiple view filters let you slice and dice the information as you need it.



The explorer interface and graphical dispatch board make shop floor management a snap. Visual manufacturing couldn't be easier!

Scheduling

Work orders may be forward-scheduled or backward-scheduled, using infinite loading. By optionally tying component requirements

Data Collection

Reporting labor at the routing step level is crucial to proper variance reporting. Data collection screens provide for the collection of labor information by employee on a step-by-step basis, at the operation level.

Since labor is already being collected, why not pass the information to payroll – whether it is Solomon Payroll, or a third-party payroll system? *Shop.Floor.Control* provides you with this capability.

Countpoint backflushing (aka Paypoint backflush-ing) is supported as a work order is moved from step to step on the shop floor, providing for the automatic issue of components, as well as application of labor and overhead each step of the way.

Additionally, production yield and component scrap may be reported as each step is reported complete.

Outside Processing

Linking an outside routing step to a purchase order provides the control necessary to manage your work order when it must move off your premises.

Use Shop Status Inquiry to view the related purchase order...even send email to the contact person at your vendor!

Yield Adjustments

As part of the scheduling process, Shop Floor Control will optionally adjust component requirements and routing steps to reflect the impact of planned yield at the routing step level.

Reporting

Although the Shop Status Inquiry and Enhanced Work Order Inquiry are key applications that will make day-to-day management of your shop floor a less challenging task, reports are still the solid foundation of any good shop floor control system.

Some of the reports included in this module are:

- Shop Papers
- Dispatch Lists
- Shop Loading
- Routings
- Efficiency
- Utilization
- Variance

Some of the features delivered by Shop Floor Control:

- Shop status inquiry using an explorer-type interface
- Enhanced work order inquiry
- Shop calendar
- Mass change of processing stages
- Dispatching
- Scheduling & Capacity
- Support for outside processing
- Countpoint backflushing
- Optional automatic overhead application
- Work center movements
- Labor reporting by operation
- Yield and Scrap
- Efficiency & Utilization reporting
- Variance reporting

Prerequisites:

- Solomon Inventory
- Solomon Bill of Materials
- Solomon Work Order

Available on these Solomon Versions:

- Solomon 5.0, 5.5

Business Issues

How This Flexible Product Can Help

Where on the shop floor is my work order?	Use Shop Status Inquiry By viewing the work order you are concerned about, you can tell what work center it's in, where it came from, and where it's scheduled to go next.
One or more of my work centers is over capacity...which work orders should I move?	Shop Status Inquiry has multiple views Order your view by work center and select the work center of interest. You can quickly examine what work orders are scheduled to consume capacity on the day in question.
What activities are scheduled for the Assembly work center for the next 2 days?	View your work center through Shop Status Inquiry Order your view by work center and select the work center of interest. You can quickly examine what work orders are scheduled to consume capacity on the day in question.
I need to report labor at the Routing Step level.	Data Collection provides multiple functions The Data Collection application is conveniently arranged with separate tabs for Labor, Work Center Movements, Timeclock, and a combination of all three.
How is my work order doing?	Enhanced Work Order Inquiry is the answer Extending the Work Order module's financial view of your work order into the operational areas (material lists, completions, actual vs. planned routing, etc), you can keep tabs on what's happening with the work order in question.
Will the work order be done on time and on budget?	Examine projected status through Enhanced WO Inquiry By reporting what your best guess is of your work order's percent complete, Enhanced WO Inquiry will inform you as to whether you'll come out ahead, behind, or on-the-mark!
How do I know how efficient my shop personnel are? How well utilized are they?	Efficiency and Utilization reporting will provide the answer This series reports how efficient the shop's production is, as well as how well shop resources are utilized.



**SANDLER • KAHNE
SOFTWARE**

7731 Tuckerman Lane, #120
Potomac, MD 20854

Voice: 301.963.7300 x112

Fax: 301.963.7335

E-Mail: sales@sksoft.com

Web: www.sksoft.com

© Sandler•Kahne Software, Inc.
2000-2002 all rights reserved

All features/functions mentioned within this document are subject to change. This document is for information purposes only. Sandler•Kahne Software makes no warranties, express or implied, in this document. Revised 09/28/03