

BIO™ for Microsoft Dynamics™ SL

BIO Foundation

Benefits

• Financial Analysis

Analyze financial data with BIO foundation, the cornerstone of the BIO for Microsoft Dynamics SL solution and the minimum module required. BIO foundation helps you analyze the data in your financial series of modules, including general ledger, accounts payable and accounts receivable, cash, and payroll information, giving you the benefit of keeping up to date on your financial standings.

• Perspectives People Can Use

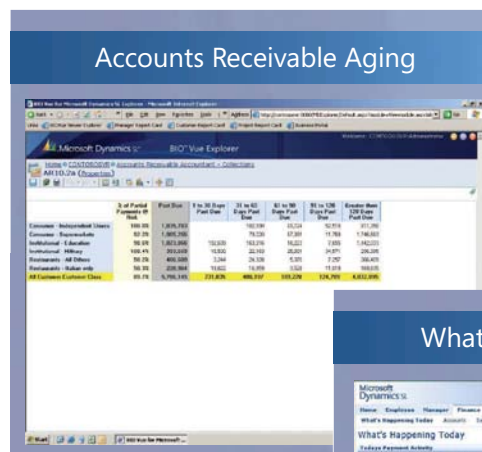
BIO foundation present information to CEO's, CFO's, department leaders, and accounting staff. With it, you can empower these leaders with a bigger picture of the financial data, showing trends, underlying causes, and performance to goal, rather than the minutia of everyday processing. The benefit – managers can investigate their data, continue to dig deeper and get to answers right away.

• Customizable Views

Get your company up and running quickly with 25 views of financial data. These views are beneficial, because they are customizable and provide a foundation for you to create information and actionable items specific to your company's needs.

BIO foundation provides the basis of the BIO experience.

Experience BIO foundation and take the first step into business intelligence. More than just an empty toolset for analysis, BIO for Microsoft Dynamics SL provides pre-configured views of data pre-built. With these views of your Microsoft Dynamics SL financial data, your people can begin to take advantage of intelligence and break through the constraints of classic, static, accounting oriented reporting. BIO foundation provides operational, financial and strategic analysis for the executive and the power user alike. BIO foundation turns data stored in the Microsoft Dynamics SL financial suite into valuable, actionable knowledge.



Use this collections view to see accounts receivables aging as well as percent of partial payments at risk.



With a quick look at 'What's Happening Today', executives can get a full picture on the day's significant events across receivables, payables, sales, and working capital.

BIO for Microsoft Dynamics SL foundation maps transactions that occur in the Microsoft Dynamics SL financial suite into groups of business activities. These activities are organized in 25 pre-defined views of the most common ways people analyze their business. People, from CEO and Chief Financial Officer to the front line manager, only have to understand their business model to be effective using these views.

BENEFITS

FEATURES

Fits with your systems	Built to be compatible with the technologies you already have, the data in BIO for Microsoft Dynamics SL can be viewed in BIO Vue, Microsoft Outlook, Excel, SharePoint, Business Scorecard Manager, business portal, Internet Explorer, and more.
Analysis of the financial data	BIO foundation provides access to data stored in the Microsoft Dynamics SL general ledger, accounts payable, accounts receivable, and payroll modules, and tracks over 150 business activities that occur within the financial modules.
Predefined to get you started	BIO foundation installs 25 predefined views of Microsoft Dynamics SL financial information. These views provide new perspectives on the financial data and are configurable different people to create the analysis needed for their function.
Dimension substitution	If you use Flex-Key definitions in the subaccount field of Microsoft Dynamics SL, you can substitute different filtering choices by segment to present the data the way you want.
Drill down capability	Drill down to the transaction level detail from the initial perspectives.
Data security	Your data is secure. Microsoft SQL Server Analysis Services can provide security down to the individual cell level if desired.
One click installation	Installation of BIO for Microsoft Dynamics SL can be accomplished with a one-click installation for simple environments.

For more information about BIO for Microsoft Dynamics SL, visit: <http://www.microsoft.com/dynamics/sl>



This document is for information purposes only.

MICROSOFT MAKES NO WARRANTIES, EXPRESS, IMPLIED, OR STATUTORY, AS TO THE INFORMATION IN THIS DOCUMENT.

© 2006 Microsoft Corporation. All rights reserved.

Microsoft, The Microsoft Dynamics Logo, SQL Server, Office, and Excel, SharePoint, are either registered trademarks or trademarks of Microsoft Corporation or Microsoft Business Solutions ApS in the United States and/or other countries. Microsoft Business Solutions ApS is a subsidiary of Microsoft Corporation. BIO is a registered trademark of NexVue Analytics Corporation.

Rev. 03/06

Microsoft